

## KARCIĞAR PEŞREVİ

Devr-i kebîr

Bolâhenk Nuri Bey

28

*Teslim.*

*2. Hane.*

3. Hane



4. Hane.





An kes . . . ki tû rā dā red . Ez i mā  
 Van kes . . . ki tû rā bi ned Ey mā

şî cî kem dā red Hey . yār . . . hey . dost . .  
 hi cî gam dā red " " " "

pî rî men sul tā nî men  
 " " " " " "

Bes . ā . . . şî kî ā sūf te . . . ā . sū . .  
 de vû hoş huf te hey . yār . . . hey . dost . .

pî rî men sul tā nî men der sâ . . . yei an zûl

fi . . . Kû hal . ka vû ham dā red

hey . yār . . . hey . dost . pî rî men sul tā nî men

yār . . . yār . . . yār hey ih san me ded

hey hey guf ran me ded yār . . . yār . . .

yār . . . yār . . . yār yû re gîm yār

yâr yû re gîm del cî qe rim gör ki ne ler var

mer ha ba, ey cā ri bā ki y pa di şa hi kām . kār

Rū hi bahşi her ki ra nū a fi tā bi her di yār

in ci hā nū an ci han her dū gu lā mi em ri tūst

ger ne hā hi ber he met zen Verhemi hā hi bi dār

yār . . . yār . . . yā ri hey sul tā ni men

hey hey rā' nā yi men he yi hey zi bā yi men .

hey . . . hey mak bu li men

Mut ri bā es rā ri ma'rā bā zi gū yār . . .

yār . . . yā ri hey sul tā ni men Kis sa hā yi

can fe zā rā bā zi gū yār . . . yār . . .

yā ri hey sul tā ni men Mahze ni in na fe tah nā

ber kū sā yār . . . yār . . . yā ri hey sul

ta ni . men sı rı cā rı Mus . ta fa rā bā zı gū

yār . . . yār . . . yā rı hey sul tā ni men

Tel . hi . . ne . kũ ned sı rin . ze kâ nem

tel . hi . . ne kũ ned sı rin . ze kâ nem

Hâ . lı . ne kũ ned . Ez mey . . di he nem

Ez sı . re i o men . sı . ri di lem . .

ez sı . re i o men . sı . ri di lem

der an . be de eş . . sı . rin . . su ha nem

Mah . bu . . bi men mer . gu . . bi men

mat lu . bi men . . mak . bũ . . li men

## *Kinci Selâm*

*Exfer*  
(2)  
Ah Ah . . . sul ta ni me ni  
der men bi de mi

ni - sul ta ni - meni  
mi - men zin de se vem

ah en der di - lü can  
ah yek can çi se ved

Can sad ma ni - meni  
ved ca

ah i ma ni - meni

Terennüm.

Terennüm.

## Üçüncü Selâm

Devrikebir

28 A sı kan der kû yi

ca nan Es sa la

... be li yā ri men ... sū yi

an ... hur si di ta

ban ... es sa ... lā ... be li

yā ri men ... Sem si teb

ri zi zi ba lā

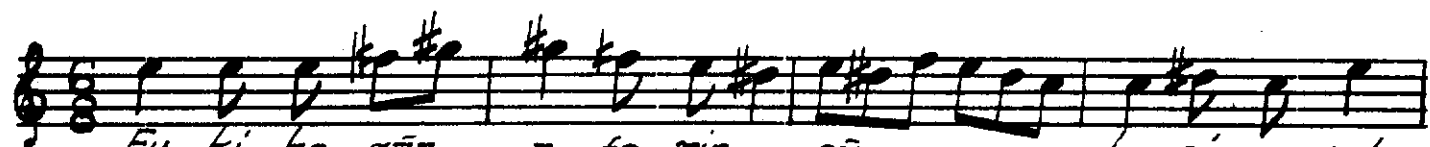
yi fe lek ... be li yā ri

men ... her ze ma

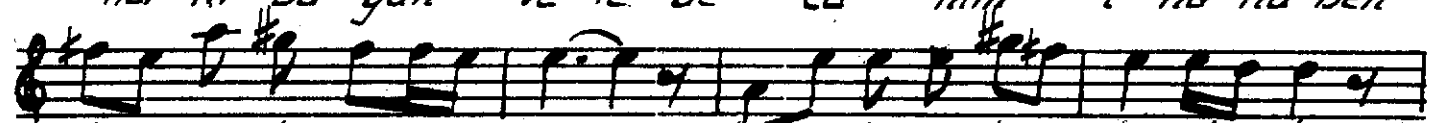
ni mi ke sed han es

sa lā

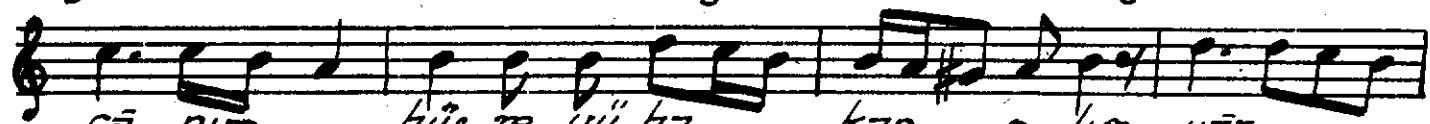
Terennüm.  
hey yi hey yā rim



Fu ki he zār a fe rin cā nim bu ni ce sul  
Her ki bu gūn Ve fe de cā nim i na nu ben



tan o lur ku li o lan ki si ler  
yūz sū te yok sul i se bay o lur

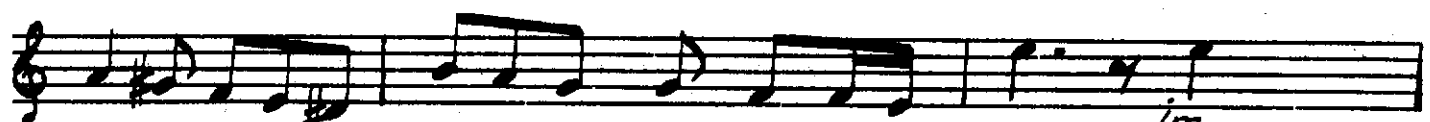
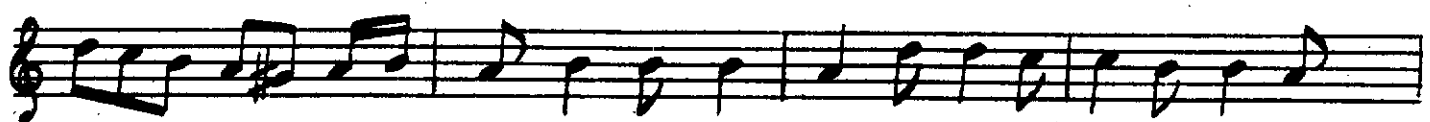
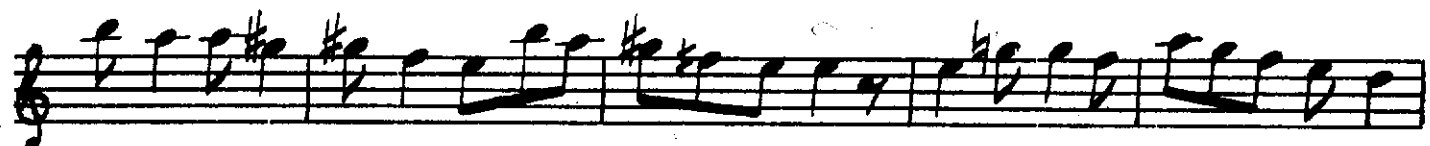


cā nim hūs te uū ha kan o lur yār  
cā nim bay i se sul tan o lur yār

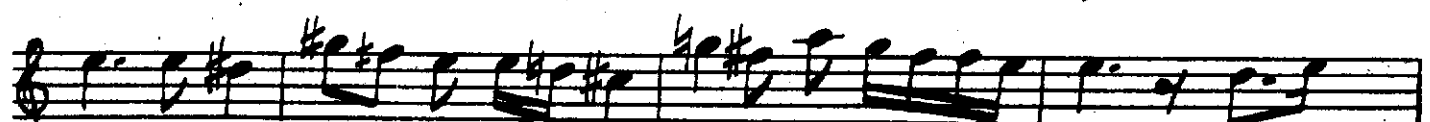


yār hus te uū ha kan o lur  
bay i se sul tan o lur.

Terénnūm.



im



ruz se mā as tū mū da mes tū se ka yi ger



dan sũ de ber cem i ka deh ha yi a fã

yi . ger dan sũ de ber cem i ka deh ha yi a fã

yi Fer ma nĩ se kal lã hũ re si dest . bi nũ

sĩd in ten he me can şev ku zi ih

va ni sa fa yi . in ten he me can

şev ku zi ih va ni sa fa yi Ey

sa ki i aş ki hi zũ piş a ri şe rab . . . Vey

mut ri bi cân zi lût fı bũn va zi re bab

vey mut ri bi cân zi lût . . fu bũn

va zĩ re bab . . . Bũn ya di ne şa . .

ti rã he me kũn . mã . . . mur ta

ger ded e şas . . . Őmr e zin sey li ha rab

Tâ ker ded e sâs . . . Ömr . . . e zin

Sey li hâ rab . . .  
Terennüm

Bâ de bi dîh sa kı ya . hân me hî ta

ban re sid<sup>1</sup> <sup>2</sup>

nî gâ mû nî gir ye mâ ned cûn gû li han

dan re sıyd . . . . . seh . rû hâ sem zin de şûd

Cûm le ci han . ben de şûd . . . . . seh rû hâ sem

zîn de şûd cûm le ci han bende şûd . . . . .

cûn zi de ri , seh ri ma mevkibi sul tan resiyd

yâr . . . yâr . . . ah yâ ri men yâr

ah yâ ri men yâ ri mera dost yâ ri men vâz  
Terennûm.

Kü castı mut ri bı can ta zi mârta ha yı sa lâ

der üf ke ned de mi o . der he zâ ri ser

Sev . . . da der üf kened de mi o . . . der

he zâ ri ser Sev . . . da cû â fi ta

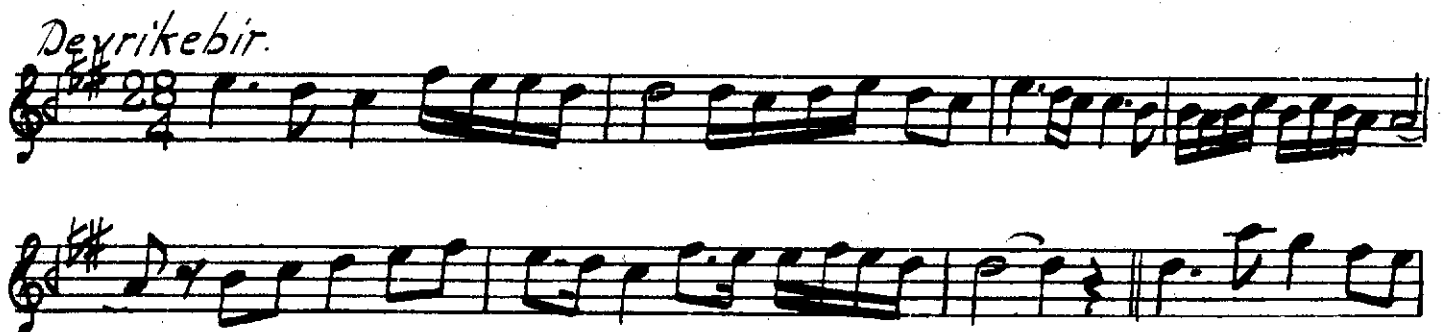

 bi ce mā . . . lest ber a med ez meş . rik ki zerre zer  
 re şî ni . . . dem ki ni' me Mev lā . . . . . na  
 ki zerre zer re şî ni . . . dem ki ni me Mev lā . . . . . na

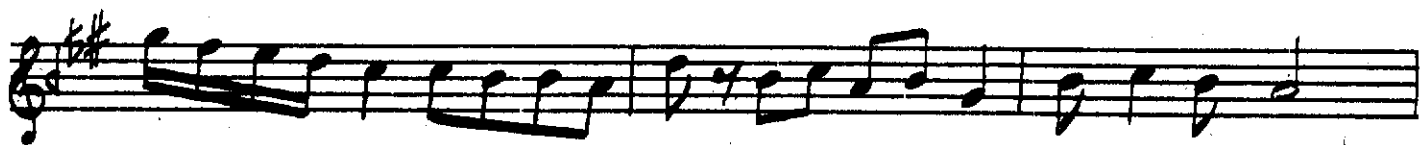
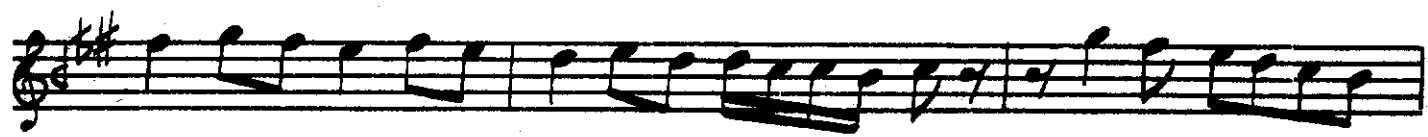
## Dördüncü Selâm

*Evfer*  

 Ah Ah sul ta ni . . . meni  
 der men bi de mi  
 ni . . . sul ta ni . . . me ni  
 mi men zin de şe vem  
 ah . . . en der di . . . lü can  
 ah yek can ci şe ved  
 Can üed sad ma ni . . . meni  
 üed sad ca ni meni  
 ah . . . . . ma . . . . . ni . . . . . meni

## Lon Pesrev, Kanuni Elhem Efendi.

*Deyrikebir.*  




*Yon yürük Semai.*

